

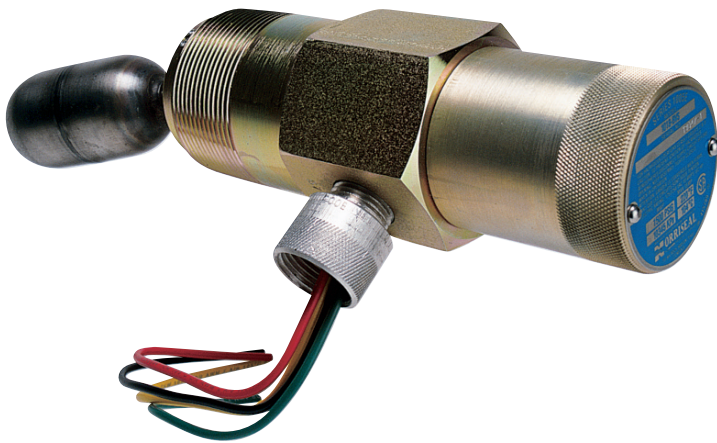
Norriseal Series 1005E Electric Liquid Level Switch

Float actuated electric switch designed for rugged use in pressure vessels

The Norriseal Series 1005E is a float actuated electric switch that opens or closes an electric circuit. The 1005E body is furnished in 1.5" or 2.0" NPT size and the material is either carbon steel (plated) or 316 stainless steel. The electric miniature switch can be furnished in SPDT or DPDT. The unit is CSA listed as explosion proof and NEMA 4.-

Features

- High or low liquid level monitor
- 316 body material optional
- NACE materials available
- CSA listed (Class 1, Group C & D hazardous locations)
- NEMA 4

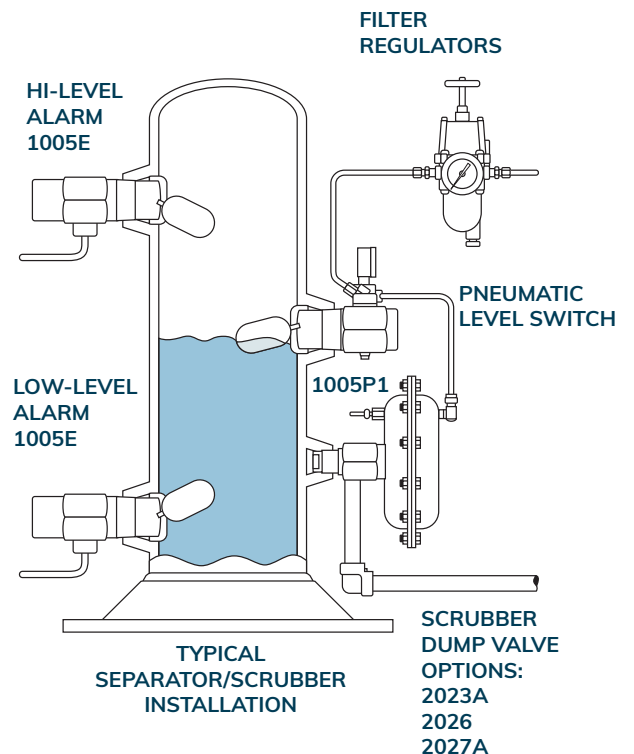


Applications

The Series 1005E switch is designed for rugged use and can be used as a high or low level alarm to monitor liquid level in compressor scrubbers and other type pressure vessels. This unit is also available for NACE applications.

Accessories

Small external horizontal float chambers (style V) are available for applications that require external mounting of the 1005E switch.



Specifications

BODY	
Sizes	1.50" & 2.00"
Materials	Carbon Steel Plated
	316 Stainless Steel
Pressure Ratings	1000 PSIG (1.50")
	2000 PSIG (2.00")

FLOATS	
Sizes	1.75" x 3.25" (316SS)
	1.50" x 2.88" (316SS)
	1.50" x 2.81" (Poly)
Materials	316 Stainless Steel
	Polypropylene
Pressure Ratings	1500 PSIG (316SS)
	2000 PSIG (Poly)
Temperature	220°F (316SS)
	140°F (Poly)

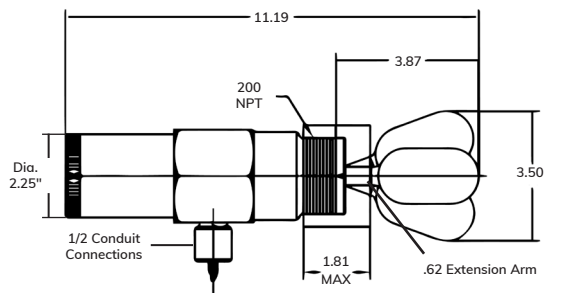
SEALS	
Standard Option	Wetted O-Rings: Viton, Buna-N
	Non-Wetted O-Rings: Viton
Optional Options	Wetted O-Rings: Low Temp Buna, Aflas, EPR

SWITCHES	
Switch Types	Single Pole Double Throw
	Double Pole Double Throw
Switch Rating*	10 Amp, ½ H.P. @125/250VAC* ½ Amp @ 125 VDC ¼ Amp @ 250 VDC

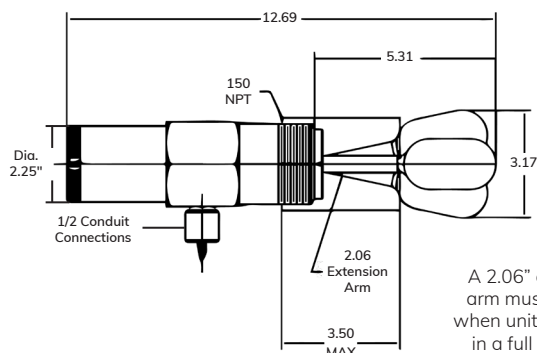
* CSA Approved

SPECIFIC GRAVITY
Refer to Model Code below

SPDT or DPDT Switch



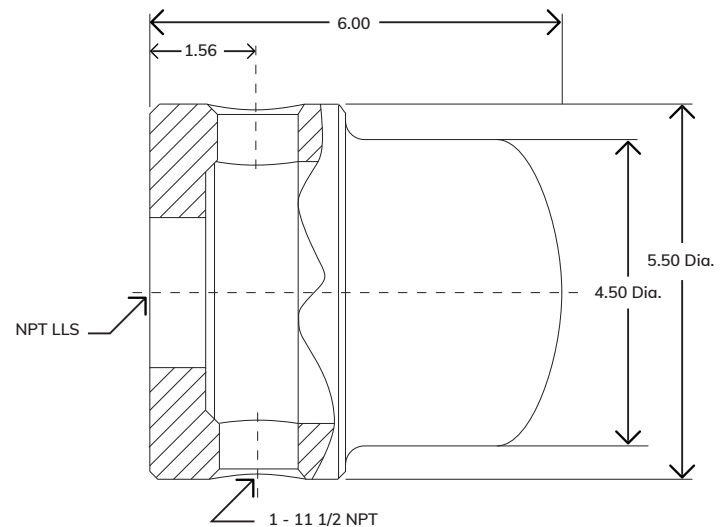
A 0.62" extension arm must be used when unit is installed in a half coupling.



A 2.06" extension arm must be used when unit is installed in a full coupling.

4V03 External Chamber

Can be mounted to 1005E switches.



Model code

1005E
2.00
1018
-
K
V
S
U

A
B
C
D
E
F
G

A

Body End Connection	
Code	Size
1.50	1-1/2"
2.00	2"

B

Materials of Construction		
Code	Body	Cap/Conduit Adapter
1018	1018 Carbon Steel	Aluminum
0316	316 Stainless Steel	Aluminum

C

Arm Material / Service		
Code	Arm	Service
-	316 S.S.	Standard
N	316 S.S.	NACE

D

Float Specifications				
Code	Float Material	Max Working Pressure	Temp. Range	End Connection
A	316 SST	1500 PSIG	-65°F to 200°F	1.50
K	316 SST	1500 PSIG	-65°F to 200°F	2.00
C	Polypropylene	2000 PISG	-20°F to 140°F	2.00
E	Polypropylene	2000 PISG	-20°F to 140°F	1.50

E

Seal Material/Temp Ratings			
Code	Seal Material	Min Temp	Max Temp
V	Viton (Std)*	-20°F	220°F
B	Buna-N	-20°F	180°F
E	EPR	-20°F	180°F
M	Aflas	-20°F	200°F
L	Low Temp Buna	-65°F ⁽¹⁾	180°F
T	Viton	-20°F	302°F ⁽²⁾

(1) With 316SS Body Material.
 (2) With High Temp electric switch

F

Type of Switch		
Code	Seal Material	Rating
S	Single Pole Double Throw	10 Amp, ½ H.P. @125/250VAC ½ Amp @ 125 VDC ¼ Amp @ 250 VDC
D	Double Pole Double Throw	10 Amp, ½ H.P. @125/250VAC ½ Amp @ 125 VDC ¼ Amp @ 250 VDC

G

Extra Options					
Code	Extension Arm	Counterbalance	Float Material – Size	Min SG	End Connection
U	0.625"	Standard	316SS – 1.75" x 3.25"	0.61	2.00
7	1.125"	Heavy	316SS – 1.75" x 3.25"	0.44	2.00
8	1.500"	Heavy	316SS – 1.75" x 3.25"	0.50	2.00
9	2.060"	Heavy	316SS – 1.75" x 3.25"	0.60	2.00
Z	1.500"	Heavy	316SS – 1.50" x 2.88"	0.48	1.50
T	2.060"	Heavy	316SS – 1.50" x 2.88"	0.57	1.50
5	1.500"	Heavy	Poly – 1.50" x 2.81"	0.86	1.50
6	2.060"	Heavy	Poly – 1.50" x 2.81"	0.94	1.50

Why you can depend on genuine Norriseal-Wellmark products

- In-house engineering and technical support
- In-depth applications experience
- Award-winning innovation and ongoing product development
- ISO 9001 certified manufacturing
- Over five decades of industry service
- Compliance with all industry standards and specifications
- Responsive service and prompt delivery
- Field support available worldwide

Contact Norriseal-Wellmark for more information about our products and services.

Texas

Houston 713-466-3552

Oklahoma

Oklahoma City 405-672-6660

Louisiana

Broussard 337-837-3223



Follow us on LinkedIn.

Request for Quote

NRS_RFQ@championx.com



NorrisealWellmark.com

Norriseal-Wellmark | 11122 W Little York Rd | Houston, TX 77041

This document is provided on an "as is" basis without warranties of any kind. Norriseal-Wellmark DISCLAIMS ALL WARRANTIES, EXPRESS OR IMPLIED, INCLUDING, BUT NOT LIMITED TO, IMPLIED WARRANTIES OF MERCHANTABILITY, FITNESS FOR A PARTICULAR PURPOSE OR SUITABILITY FOR ANY PURPOSE, TITLE, AND NON-INFRINGEMENT. While reasonable care has been taken in the preparation of this document, Norriseal-Wellmark does not represent or warrant that the contents of this document are accurate, complete, reliable, current or error-free.